

Legend

Site Boundary	Catch Basin
Parcel Boundaries	Intake
Site Impervious Surface (5.61 acres)	Manhole
5ft Topographic Contour	Outlet Structure
Stream	Unknown Location
Wetland	Outfalls
Hydrologic Soil Group (HSG)	
Group A	Other
Group C	Coll
Group B/D (See Note 1)	Conveyance (to be determined)
Group C/D (See Note 1)	Ditch
	Drainage
	Footing Drain
	Non Functional
	Roof Drain
	Underdrain
	Bioretention
	Infiltration Basin
	Detention Pond
Proposed Stormwater Infrastructure	
Manhole (Flow Return)	
Manhole/Flow Splitter	
Outlet Structure	
Particle Separator Device	
Proposed Stormwater Treatment Practice (STP) Areas	
Proposed Conveyance	

Notes:

1. The first letter applies to the drained condition and the second to the undrained condition. For the purpose of HSG, adequately drained means that the seasonal high water table is kept at least 24 inches below the surface in a soil where it would be higher in a natural state.
2. The location of stormwater management features is preliminary. Final conceptual layout depends on site soils, surveyed topography and location of on-site utilities.

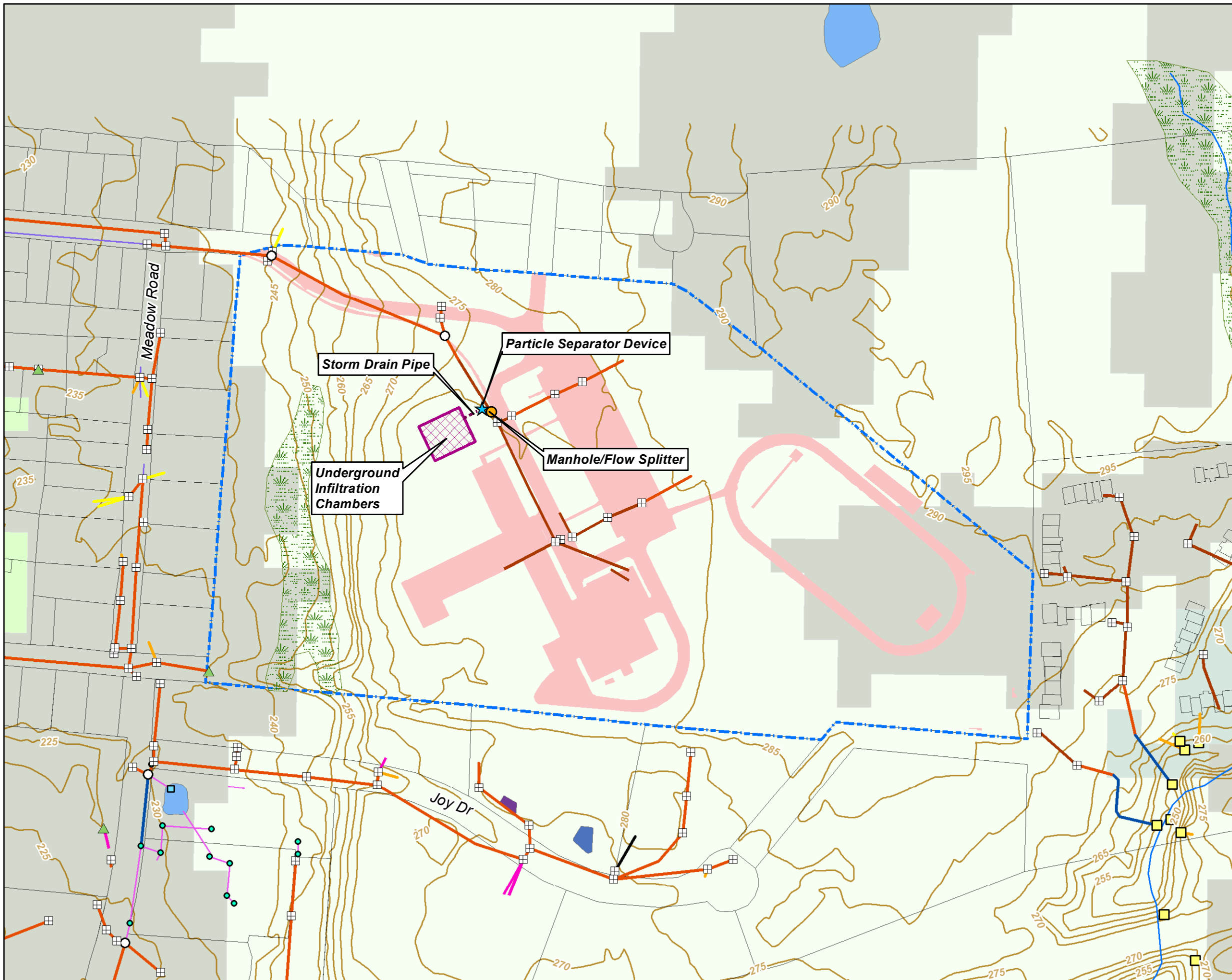
References:

1. Image source: Vermont Center for Geographic Information (VCGI) 15cm Orthoimagery, April 2018.
2. 5 ft Topographic Contours obtained from VCGI are referenced to NAVD88.
3. Hydrologic soil group obtained from USA SSURGO, December 2021. Parcels, Storm Infrastructure, and Impervious Surface obtained from City of South Burlington, October 2021.



Site Plan - Proposed
 Rice Memorial High School
 99 Proctor Ave, South Burlington, VT

		Figure 2
Acton, MA	March 2022	



Legend

- Site Boundary
- Parcel Boundaries
- Site Impervious Surface (5.61 acres)
- 5ft Topographic Contour
- Stream
- Wetland
- Hydrologic Soil Group (HSG)
 - Group A
 - Group C
 - Group B/D (See Note 1)
 - Group C/D (See Note 1)

Existing Storm Infrastructure

- Catch Basin
- Intake
- Manhole
- Outlet Structure
- Unknown Location
- Outfalls
- Other
- Coll
- Conveyance (to be determined)
- Ditch
- Drainage
- Footing Drain
- Non Functional
- Roof Drain
- Underdrain
- Bioretention
- Infiltration Basin
- Detention Pond

Proposed Stormwater Infrastructure

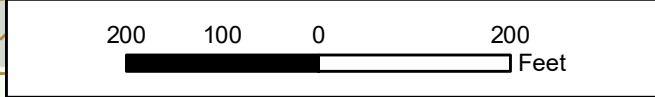
- Manhole/Flow Splitter
- Particle Separator Device
- Proposed Stormwater Treatment Practice (STP) Areas
- Proposed Conveyance

Notes:

- The first letter applies to the drained condition and the second to the undrained condition. For the purpose of HSG, adequately drained means that the seasonal high water table is kept at least 24 inches below the surface in a soil where it would be higher in a natural state.
- The location of stormwater management features is preliminary. Final conceptual layout depends on site soils, surveyed topography and location of on-site utilities.

References:

- Image source: Vermont Center for Geographic Information (VCGI) 15cm Orthoimagery, April 2018.
- 5 ft Topographic Contours obtained from VCGI are referenced to NAVD88.
- Hydrologic soil group obtained from USA SSURGO, December 2021. Parcels, Storm Infrastructure, and Impervious Surface obtained from City of South Burlington, October 2021.



Site Plan - Proposed

Rice Memorial High School
99 Proctor Ave, South Burlington, VT

		Figure 2
Acton, MA	March 2022	